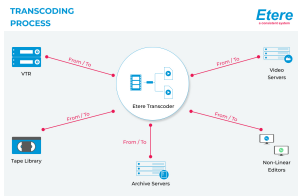


ETERE HI-RES TRANSCODER

Etere Hi-Res Transcoder is the best tool for a complete tapeless system.



Transcoding diagram

Etere Hi-Res Transcoder is the best solution for professional, enterprise and broadcast facilities requiring seamless universal file-based media transcoding or changing. It automates high-volume transcoding and delivery to any platform, including from/to any format and wrapper.

Etere products are designed to grow with you and scale as your requirements increase. This includes clustering technologies and load balancing between different processes. The product incorporates Etere-distributed architecture concepts, the only type able to survive to multiple failures. Etere offers unmatched reliability for mission critical tasks together with best speed without wasting money for redundant hardware and software.

Etere high performance transcoder offers extensive format support, robustness, reliability, excellent output quality and scalability to meet your workgroup and enterprise needs.

Etere Transcoder software runs on standard Windows servers. It is a single license for a Server, and you can have multiple processors including parallel process management.

Etere Hi-Res Transcoder can perform all the common types of broadcast manipulation:

- Transcoding from any to any format
- Audio normalizing also using ITU1770/1 loudness control
- PAL-NTSC and NTSC-PAL conversion
- Watermark insertion
- VBI and VANC data insertion
- Subtitle burning on screen
- Aspect ratio conversion
- Color correction

Supported formats

□ Video Codecs

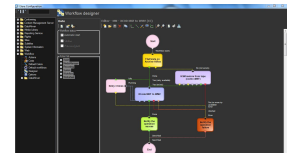
MPEG-1, MPEG-2, MPEG-4, H.263, H.264, VC-1, Flash, DV25, DV50, DVCPPro, DPS, DivX, JPEG 2000, DNxHD, AVCIntra, Image Sequences, Windows Media, RealVideo

□ Media Containers

HDV, MXF (including D-10/IMX), MPEG-2 PS, MPEG-2 TS, GXF, LXF, QuickTime, WMV, ASF, AVI, VOB
3GPP, 3G2, WMA, WAV, Broadcast WAV, Smooth Streaming, HTTP Live Streaming

□ Audio Codecs

PCM, MPEG-1 Layer II, MP3, AAC, AMR-NB, WM Audio, RealAudio, Dolby Digital, Dolby Digital Plus
Leitch VR, Nexio, Grass Valley Profile, K2, Omneon Spectrum, Quantel sQ, Avid Editing Systems, Apple Final Cut Pro, Adobe Premiere Pro, Grass Valley Edius



Additional Functions

☐ Basic Operations

Frame size conversion, Frame rate conversion, Color space conversion, Aspect ratio conversion, Interlace/de-interlace, Telecine/inverse telecine, PAL/NTSC conversion, SD/HD conversion, Cropping, Key-frame extraction, Multiple target outputs, Batch processing

☐ Advanced Operations

Timecode imprint, Subtitle/CC imprint, XML controllable titler, Metadata transport/conversion, Line 21/CC conversion, Watermarking, Logo insertion, 601/709 color space support, Video capture board support, Remote job submission, Watch folder automation, Segment extraction/insertion, 608 Word to 708 Conversion, Teletext & EBU-STL support

☐ Video Filtering

Fade in/out, Median, Blur, Sharpen, NTSC-safe, Rotate, Black/white correction, Color correction/Gamma correction, Temporal noise reduction, Deblocking, Motion Compensated Temporal Filter

HW and SW requirements

Recommended Operating Systems: Windows Server 2008 R2 (64-bit) or Windows 7 (64-bit).

Supported Operating Systems (in order of most to least recommended): Windows Server 2008 R2 (32/64-bit), Windows 7 (32/64-bit), Windows XP SP3 (32/64-bit), Windows Server 2008 R1 (32/64-bit), Windows Server 2003 R2 (32/64-bit). Processor: Intel or AMD 3.0GHz or faster Memory: 2 GB (minimum), 4+ GB suggested.

Note: faster processors, more processing cores, and more memory will increase performance

