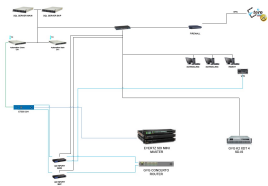


## Channel 24 upgrades to Etere

ETERE has participated in the launch of Channel 24, the newest Bangladesh TV channel. Etere has provided Channel 24 with its famous Etere Automation and the reliability of the best redundancy system thanks to Etere Clone



Channel 24



Controlled devices

Channel 24 is a Bangladesh's 24-hour entertainment TV channel set to join the fleet of media stations frequenting its television sets. The new channel 24, officially launched on Thursday May 24th, features hourly news updates and also showcase various entertainment programs throughout the day.

The name of the new station was chosen to open up the vision of 24-hours news & entertainment. Channel 24 shall be focusing on proper and professional journalism with a view to be the fastest and trusted electronic media of the country. With the latest technology and empowered journalists Channel 24 looks forward to an overall change with the media market. The concept is to provide actual news required by the audience of every segment.

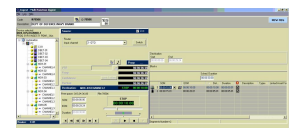
The basic need of Channel 24 was to achieve the maximum security and protection for the on-air transmission, that's why besides the famous Etere Automation playout software, also an Etere Clone advanced technology was added to the system. Redundancy is one of the methods for making a system more reliable and Etere's goal was to make the system as fault-tolerant as possible.

Etere has been able to ensure the playout reliability thanks to the use of two synchronized systems for the automation controllers which run two independent copies of the same playlist thus enabling the system to be ready to switch in case of fault.

Etere, a consistent system!

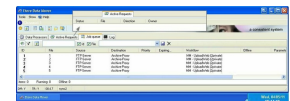
### INGESTION

Etere Ingest is used to capture media on the video server in few clicks (using predefined settings), allowing to start ingesting on the fly, drag and drop the required resources and define schedules to automatically record video, all these... without any operator intervention!



### MEDIA TRANSFERS

Media transfers are performed by Etere Data Mover which is responsible for content availability whenever and wherever it is required, and most important: according to the channel rules set in the workflow designed by the customer.



## PLAYOUT & REDUNDANCY

The core of the playout center is formed by the Etere TV Automation Main and Clone modules, which broadcast the entire TV channel programming alongside with the corresponding secondary events through a fully redundant architecture. Etere TV Automation engines are installed in two different PCs and they synchronously control the playout of the same playlist from the decoders of two video servers, thus granting transmission continuity both in case of failure or maintenance of the playout chain due to the Etere TV Automation capability of switching automatically to clone in case of failure of the main chain.

