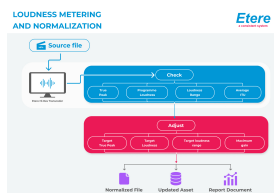


## Etere Introduces ALC (Advanced Loudness Control)

From Etere version 29.1, all Etere modules are integrated with ALC (Advanced Loudness Control) and automatic audio control to prevent excessive audio jumps.



Etere logo



Etere Loudness Control diagram



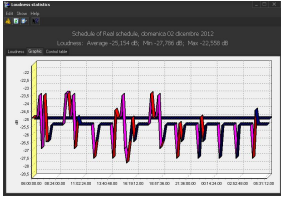
Multiple screens of ETX-M



ETX-M IP Multiviewer



ETX Logo



## Loudness Indicator

Etere launches automatic loudness control for its channel-in-a-box solution, **Etere ETX** as well as its IP multiviewer solution, **ETX-M**. It functions both as a loudness measurement and real-time automated leveling. Packed with features to automatically detect loudness problems including automatic jumps between programs and commercials as well as signal handling for all worldwide recommendations for loudness measurement, Etere automatic loudness control is ideal for professional monitoring across content preparation, production and post-production workflows.

The loudness control will respect:

- ITU R BS-1770
- ITU R BS-1770-2
- ITU R BS-1770-3

Integrative with Etere ETX-M's 9 display monitors and with support for up to 30 input sources, users of Etere automatic loudness control is able to manage all loudness monitoring from a single software interface, thus eliminating the high costs and complexity associated with traditional devices. Etere automatic loudness control can be used across multiple applications and devices. In the event of an audio error, authenticated users are notified instantly through alert emails. Etere software lowers costs, increases performance and facilitates audio processing.

**Etere ETX-M IP Multiviewer** is capable of managing multiple inputs of network and live video sources for a simultaneous broadcast and monitoring from a single software interface. It supports up to 9 display monitors and 30 input sources. It also features email alert setup, log reports as well as real-time previews. Etere ETX-M IP Multiviewer is integrative with Etere ETX Legacy Converter which serves to convert SDI in and SDI out in IP streams with very low CPU impact, enabling it to support multiple channels seamlessly. Etere ETX-M IP Multiviewer also features an integrative Newtek NDI converter which can convert SDI or IP streams to NDI IP data with support for all requirements of I/O in a single box. Users are able to select and configure UDP, RTP, RTSP, RTMP, SDI (require I/O card) and SMPTE 2110 (require I/O card). Etere ETX-M IP Multiviewer is also highly redundant, each I/O process is independent of one another and every output can be connected to multiple NDI sources. It is possible to create 2 I/O in different Etere ETX-M IP Multiviewer hardware that acts as main and clone, with external main or backup switching.

**Etere ETX** is a complete channel-in-a-box software solution with full ingest and playout capabilities. It supports HTML5 graphics and 4K professional quality video broadcast with multiple frame rates. It provides support for all the commonly used essences and wrappers in the broadcast industry including SDI output, HEVC/H.265 encoding as well as multiple layers of 2D and 3D graphics. With the integrative ETX inserter, operators are able to create closed captions including CEA 608 and CEA 708. ETX also comes equipped with time delay capabilities, making it suitable even for live subtitling. Etere ETX is a part of the Etere Media Enterprise Resource Planning (MERP) framework which is highly scalable and flexible, enabling users to expand their workflows and system functionalities anytime without a major change in the system. The audio codecs that are supported include AAC, MP2, MP3 and Flac. Video codecs which are supported include DVCPRO, MPG1, MPG2, MPG4, H.264, HEVC/ H.265, DNxHD and ProRes. Etere ETX also supports graphic file formats such as TGA, AVI, MOV, SWF, PNG, JPEG and GIF.

For more information, visit **NewTek NDI**. #NDIcentral

## **About Etere**

Etere was established in 1987 in Italy and it is amongst the worldwide leaders in Media Asset Management (MAM) and channel-in-a-box software solutions. Etere Media Enterprise Resource Planning (MERP) framework of scalable solutions are used by media enterprises across the end-to-end workflow. Etere MERP modular software including Media Asset Management (MAM), Airsales, Ad Insertion, Playout Automation, Broadcast Management System, HSM Archive, NRCS Newsroom, Broadcast Management System, Broadcast video over IP, Censorship, Closed Captioning and Subtitle Management are built with an innovative architecture, offering the best flexibility and reliability in the market. Etere headquarters is in Singapore and it has a 24/7 support centre in Italy.

