

Etere ETX Implements Support for Microsoft ReFS File System

Etere ETX delivers support for the Microsoft ReFS file system which prevents file corruption, boosts file integrity, resilience and performance with cutting-edge technology.



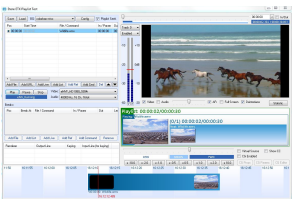
Etere logo



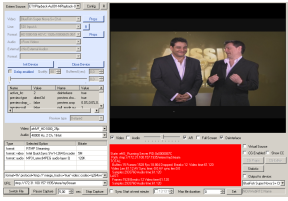
Microsoft ReFS



ETX Logo



ETERE ETX interface



ETX Streaming

Etere announces support for Microsoft ReFS file system with its channel-in-a-box software, Etere ETX. ReFS prevents file corruptions, provides high data availability, proactive file validation and automatic corrections. ReFS has its own mechanism for keeping up with file metadata. It is ideal for storing large amounts of data and can be used for file shares. With increased demands for high quality content and file distribution across multiple platforms, Etere expands its interoperability, enabling companies to fully leverage the agility and versatility of next-generation solutions.

About Etere ETX

ETX is a complete channel-in-a-box with full playout and streaming of HD/SD digital video, audio, graphics and animations. It also features full IP in and out capabilities. ETX simplifies the creation of professional playout and streaming without the use of middle-ware or proprietary hardware.

- 4K ready
- Graphics engine allows overlay of static/animated logos and crawlers on up to 8 layers
- Create live subtitling seamlessly with ETX inserter and time delay
- Media streaming servers allow engaged audiences to share content on social media
- Full IP support for both HD and SD videos, supports NewTek NDI
- Fully compliant DVB (Digital Video Broadcasting) stream

About Resilient File System (ReFS)

ReFS is Microsoft's newest file system and it applies to Windows Server 2016, Windows Server 2012 R2 and Windows Server 2012.

- Prevents Data Corruption:** ReFS uses checksums for metadata and optionally for file data, enabling ReFS to detect file corruptions reliably
- Proactive Error Identification and Correction:** ReFS automatically validates data before it reads and writes. Additionally, it features a data integrity scanner, known as a scrubber that periodically scans the volume, identifying latent corruptions and proactively triggering a repair of corrupt data. ReFS also features real-time tier-optimization, block cloning and sparse VDL to support dynamic workloads.
- Repairs Corruptions Without Downtime:** ReFS is capable of repairing detected corruptions automatically through the use of backup data provided by storage spaces. Because the repair processes are localized to the area of corruption and performed online, no volume downtime is needed
- Data Integrity Protection:** If no backup copy of the corrupted data is available, ReFS removes the corrupted data from the namespace, ReFS periodically scrubs file system data to look for differences in an event to combat bit flips that can occur over time due to data stored over a long period of time in the same location
- Mirror-accelerated Parity**
ReFS divides a volume into two logical storage groups known as tiers. The tiers have their own drive and resiliency types, enabling each tier to be optimized for either performance or capacity.
- Accelerated Recovery from File Corruptions without affecting Volume Availability**
ReFS features block cloning which accelerates copy operations as well as sparse VDL which allows ReFS to zero files rapidly and reduce the time needed to create fixed VHDs
- ReFS supports both **4k and 64K cluster sizes**

For more information, visit **NewTek NDI**. **#NDIcentral**



About Etere

Etere was established in 1987 in Italy and it is amongst the worldwide leaders in Media Asset Management (MAM) and channel-in-a-box software solutions. Etere Media Enterprise Resource Planning (MERP) framework of scalable solutions are used by media enterprises across the end-to-end workflow. Etere MERP modular software including Media Asset Management (MAM), Airsales, Ad Insertion, Playout Automation, Broadcast Management System, HSM Archive, NRCS Newsroom, Broadcast Management System, Broadcast video over IP, IP Multiviewer and Live Censorship are built with an innovative architecture, offering the best flexibility and reliability in the market. Etere headquarters is in Singapore and it has a 24/7 support centre in Italy.



About Resilient File System (ReFS)

The Resilient File System (ReFS) is Microsoft's newest file system, designed to maximize data availability, scale efficiently to large data sets across diverse workloads, and provide data integrity by means of resiliency to corruption. It seeks to address an expanding set of storage scenarios and establish a foundation for future innovations.



Resilient File System (ReFS) Overview