

## Content + Technology: Etere MAM Supports the Burmese Alphabet

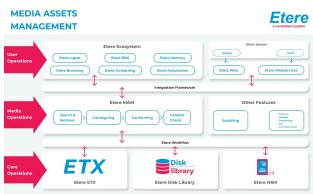
Etere supports Burmese Alphabet. The company has recently concluded a successful run at Communicast 2016 Myanmar which was held at the Novotel Yangon Max from the 6th to the 8th of December in Myanmar.



Content + Technology

The latest enhancement of Burmese Alphabets support has enabled our customers and partners to roll-out Etere training initiatives in the country's main language and to adapt Etere systems with full flexibility and versatility across the country.

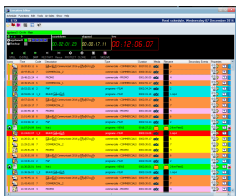
Etere's modular solutions is able to connect and manage the end-to-end media lifecycle of any broadcast or media company. Its modules include Media Asset Management, Ad Insertion, Newsroom, Censorship, IT Payout, Executive Scheduling etc.



Media Asset Management

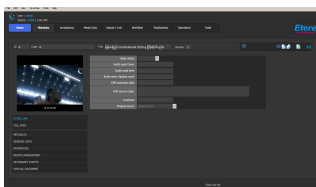
Etere system future-proofs your investment with an integrated modular system that allows you to build and customise a system that not only suits your business requirements but is also able to scale according to your future needs. Its full flexibility also enables seamless integration with third party tools and solutions for advanced interoperability.

Additionally, Etere systems are designed with a distributed system that ensures system redundancy and resilience for a reliable performance at every stage of the workflow. Etere systems also come with free upgrades to increase your returns on investment.



Support for the Burmese characters

[Etere MAM Supports the Burmese Alphabet](#)



Etere systems supports Burmese characters