

Etere at NATEXPO 2006

ETERE will show its software broadcast solutions at the Stand C74 in Hall No.3.



Etere 16.3 solution

ETERE has a huge vantage against competitors because is the only company worldwide able to offer a complete solution for your TV station using a shared framework to manage all the television business: automation, scheduling, air-time sales, traffic, media management and indexing, archiving, news, recording/ingest, video logging and audience control, web, etc.

ETERE will show to broadcasters an edge technology solution that includes more features than any other in a single common framework. ETERE will show at NAT EXPO its famous ETERE Media Management, Traffic, Automation and other software solutions for TV stations of any size and any type. ETERE Automation is practically the most powerful, the most scalar and the most reliable automation system among all systems offered on market.



NAT EXPO 2006

It controls all the devices which are normally used in a TV station: video servers, audio/video routers, master control/mixer video, logo generators, titles, subtitling system, cart machines for automatic caching, VTRs and all necessary things for your TV. Its flexibility and modularity is meant for TV stations of any size and type: single or multi channel, national, regional, local, satellite, cable, general, thematic.



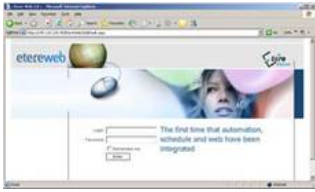
etereweb

The new ETERE 's features are:
ETERE 16.3: it's a new design of the ETERE system. More Wan oriented, with increased security to be used also from geographically distributed companies. ETERE 16.3 is a major release of the system that also includes full Microsoft SQL2005 support and more than 50 new security properties to be set.



etereweb

23/11/2006 Event



etereweb