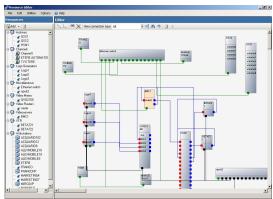


## Etere interface for Blackmagic Routers

Blackmagic is the latest in the series of audio/video routing switchers controlled by Etere using the IP protocol



Company Logo of  
Blackmagic Design



resource editor

Blackmagic routers can be controlled now via IP using Etere, those routers provide a variable number of inputs/outputs and an additional level for an output video monitor and a serial port.

An IP-based device management is more flexible and saver since it requires less cabling and fewer devices.

Etere's Blackmagic IP-based driver is included in the latest Etere release.

Blackmagic routers can be combined using the virtual router technology of ETERE, so multiple routers can be easy connected to create router of the necessary I/O configuration. Etere can also control 2 independend routers for a complete redundant environment.

### About Etere

Etere was established in 1987 it is amongst the worldwide leaders in Media Asset Management (MAM) and channel-in-a-box software solutions. Etere Media Enterprise Resource Planning (MERP) framework of scalable solutions are used by media enterprises across the end-to-end workflow. Etere MERP modular software including MAM, Airsales, Ad Insertion, Playout Automation, Broadcast Management System, HSM Archive, Newsroom Computer System (NRCS), Broadcast Management System, Broadcast video over IP, Censorship, Closed Captioning and Subtitle Management are built with an innovative architecture, offering the best flexibility and reliability in the market. Etere headquarters is in Singapore and it provides a worldwide 24/7 support.