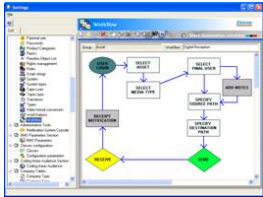
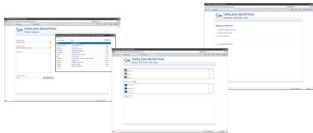


## Etere Supports Enhanced Digital Reception

ETERE digital reception allows you to automate the process of media transfer, digital receipt and notification and tracking thus greatly increasing operational efficiencies



Workflow



Tapeless Reception GUI

The comprehensive management and transfer of digital media is only as effective as the level of awareness and efficiency surrounding said transfer.

ETERE digital reception allows you to automate the process of media transfer, digital receipt and notification and tracking thus greatly increasing operational efficiencies.

The process is simple: the asset and media to be transferred are selected, the end user specified (including the ability to add customized notes), the file is sent from various location options (local or network drive, E-VTR or XDCAM) and it is then checked and accepted at its destination.

A digital receipt is automatically sent by email to the end user alerting them of the arrival of the new media. Automatic receipt notification improves workflow efficiency and reduces idle media time.

Full access history is available on a real-time basis for optimum process visibility and configurable access authorization allows you to determine individual users or user groups access rights.

ETERE's support of web services further facilitates digital media transfer allowing maximum integration with external applications. Digital data can be checked or uploaded remotely via Etere WEB dramatically increasing a station's media management efficiency and return on investment of said media.

Supporting a comprehensive and fully effective systems management, digital reception interacts with ETERE Workflow to ensure correct operating procedures are followed and the relevant authorization and notification requirements are met.