

RAI Enhances its Archive System with Etere

Etere increases the efficiency of metadata management.



RAI

RAI in its broadcast centre of Turin has added a new channel to its 7 channels. This new channel uses the Etere Automation system.

Etere manages all the video archive systems and indexes all information relative to the assets with the MAM indexing system.

Etere Media Manager moves the videos between the archive and the onair videosever, while Etere HSM stores the videos.



RAI

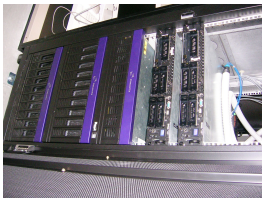
The system is very complex and consists of:

- 4 PDR 300 videosevers from Thomson used for onair
- 2 Profile XP videosevers from Thomson used for onair
- 2 Thomson Turbo I_VDRs from Thomson used for onair
- 2 Thomson Turbo I_VDRs from Thomson used as far caching devices, located 600 km away from the onair system
- 1 Thomson M2100 Master Control
- 1 Miranda Imagestore logo generator
- 40 TB of Sun Storagetek Disk archive on Bladestore technology
- 4 VTRs for ingest

The system not only controls the archive and restoration of videos from the Thomson videosever, but it also manages and retrieves the Louth segment database.

Etere MAM allows full control of all the video segments, sharing the content between all the channels even if they are based on different technologies.

The handling of metadata is one of the key aspects of the project, together with the ingest management capability.



RAI

About Etere

Since its beginnings in 1987, Etere has been preparing users to be ready for the future. Etere is a worldwide provider of broadcast and media software solutions backed by its mark of excellence in system design, flexibility and reliability. Etere Ecosystem software solutions including Media Asset Management, Channel-in-a-Box, Newsroom, Ad Insertion, Airsales, Automation, Broadcast Management System, Censorship, HSM Archive, Logging, OTT/VOD Delivery, Radio-Live, Subtitling and Captioning software are built with an integrative Web and Windows architecture that are customisable to fit perfectly in your system. Etere delivers on its service excellence commitment with its dedicated team and a 24/7 worldwide support. Its portfolio of digital technologies and market-proven remote/on-site solutions including consultancy, training, installation and demonstrations are ready to run with your business no matter where you are. Etere enhances your adaptability for the future and empowers you with the software tools to drive your business to greater heights. www.etere.com



RAI