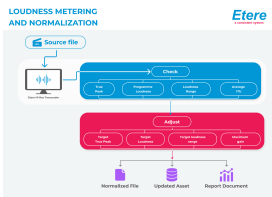


## LOUDNESS CONTROL PLUGIN FOR ETERE HI-RES TRANSCODER

The single package that adds flexible loudness measurement and adjustment to Etere Hi-Res Transcoder.



Workflow of Loudness Control

ETERE Loudness Control is the plug-in that adds to ETERE Hi-Res transcoder a versatile and convenient automated loudness control, giving users in broadcast, production and delivery full control over the audio—specific aspects of their workflows.

ETERE users now have a complete and adaptable solution to measure and maintain loudness thanks to features below:

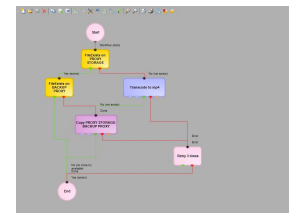
- Automate the process of insuring loudness compliance
- Maintain compliance with all international standards
- Constrain costs with always upgraded software
- Reduce manual intervention on Delivery and QC
- Extract and rewrap containerized audio essence

ETERE Loudness Control amplifies the loudness control capabilities so you can automatically prepare any element for any format or job requirement. Etere brings the ability to measure and adjust your media loudness in accordance with major standards (ITU-R BS.1770-1, BS.1770-2, EBU R128 and ATSC A/85), thus ensuring Loudness Range and True Peak targets.

### MERP CLOUD

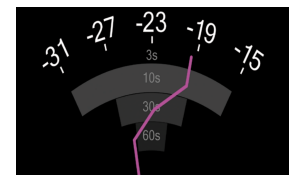
Make your workflows smooth and intelligent, dramatically improving organization efficiency with these features:

- ☐ Global workflow-driven framework for a complete and automated business management (ingest, QC, media management, newsroom tasks, etc.).
- ☐ Flexible and powerful platform for an efficient resources management (e.g. mix manual and automatic controls, assign and monitor resources, etc.).
- ☐ Shared information repository for real-time metadata management (e.g. loudness values, compliance requirements, etc.).



### Measurement

- ☐ Supports ITU-R BS.1770 (ITU-R BS.1770-2 & 3) and EBU R-128 (EBU R-128 2011) standards.
- ☐ Check Programme Loudness, Loudness Range, Maximum True Peak Level, Average Loudness ITU, Momentary Loudness and Short Term Loudness.
- ☐ Compliant with the CALM Act and ATSC's Recommended Practice A/85:2009.
- ☐ Measurement results are reported throughout file at one second intervals.



## Adjustment

- ☐ Correction performed in accordance with EBU R 128, A/85 and other recommend practices.
- ☐ Includes Programme Loudness, True Peak and Loudness Range values.
- ☐ Mono, stereo and multichannel PCM configurations can be processed.
- ☐ Target values can be set for all adjustment parameters.



## Supported Formats

Linear PCM Formats

- ☐ WAV, BWF, AIFF

Containerized Formats

- ☐ MXF, QuickTime

Program Configurations

- ☐ Stereo, 5.1 (Surround), 5.1 + 2 (Surround 1-6, Stereo 7-8), 2 + 5.1 (Stereo 1-2, Surround 3-8)
- ☐ 2x2 (Two Stereo Pairs), 3x2 (Three Stereo Pairs), 4x2 (Four Stereo Pairs), 4+4, 4+2x2
- ☐ 4 (Four Channels), 7.1 (Eight Channels)



## Requirements

- ☐ Operating Systems: Windows Server 2012 (64-bit), 8 (32/64-bit), 2008 (64-bit), 7 (32/64-bit), 2003 R2 (32/64-bit)
- ☐ Processor: intel or AMD 3.0GHz or faster
- ☐ Memory: 4+ GB (recommended) or 2 GB (minimum)

